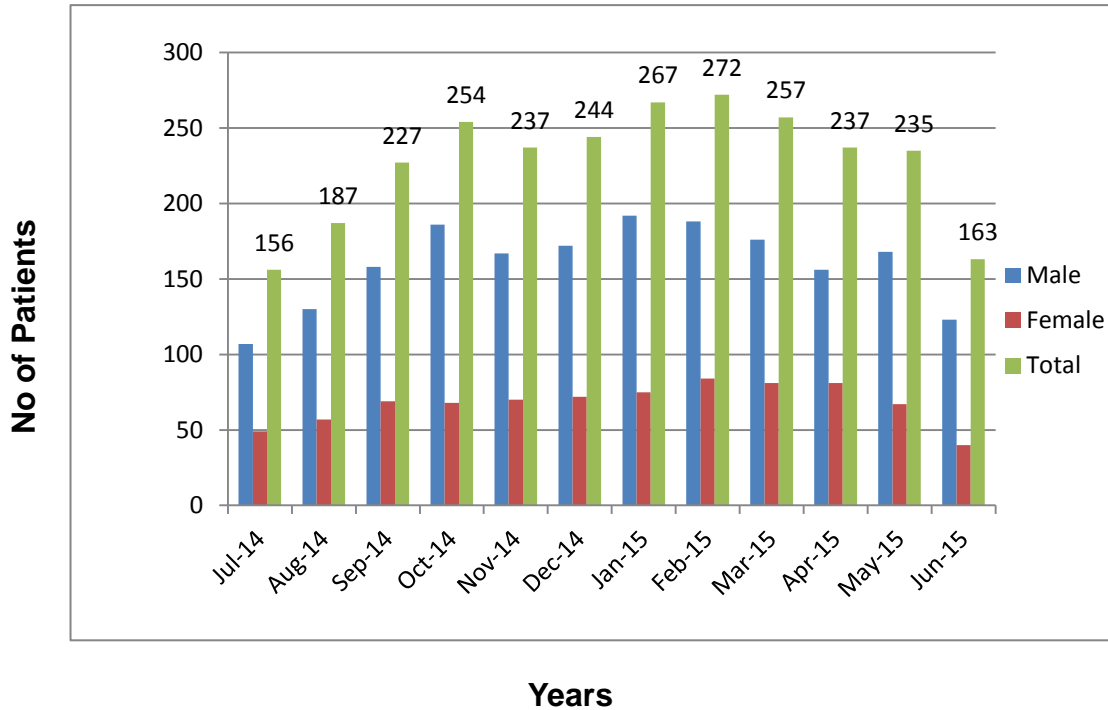


Summary of Angiography July 2014 To June 2015

S.No	Month & Yea	Male	Female	Total
1	Jul-14	107	49	156
2	Aug-14	130	57	187
3	Sep-14	158	69	227
4	Oct-14	186	68	254
5	Nov-14	167	70	237
6	Dec-14	172	72	244
7	Jan-15	192	75	267
8	Feb-15	188	84	272
9	Mar-15	176	81	257
10	Apr-15	156	81	237
11	May-15	168	67	235
12	Jun-15	123	40	163
Total		1923	813	2736

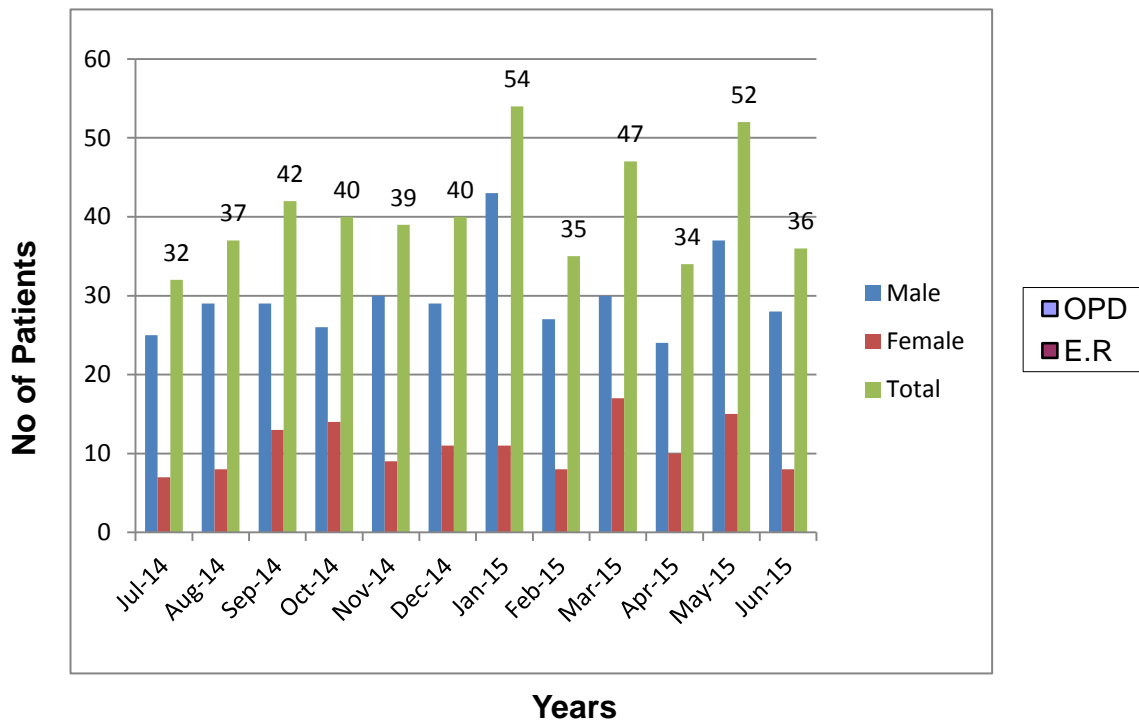
Summary Of Angiography 1 July 2014 - 30 June 2015



Summary of Angioplasty July 2014 To June 2015

S.No	Month & Yea	Male	Female	Total
1	Jul-14	25	7	32
2	Aug-14	29	8	37
3	Sep-14	29	13	42
4	Oct-14	26	14	40
5	Nov-14	30	9	39
6	Dec-14	29	11	40
7	Jan-15	43	11	54
8	Feb-15	27	8	35
9	Mar-15	30	17	47
10	Apr-15	24	10	34
11	May-15	37	15	52
12	Jun-15	28	8	36
Total		357	131	488

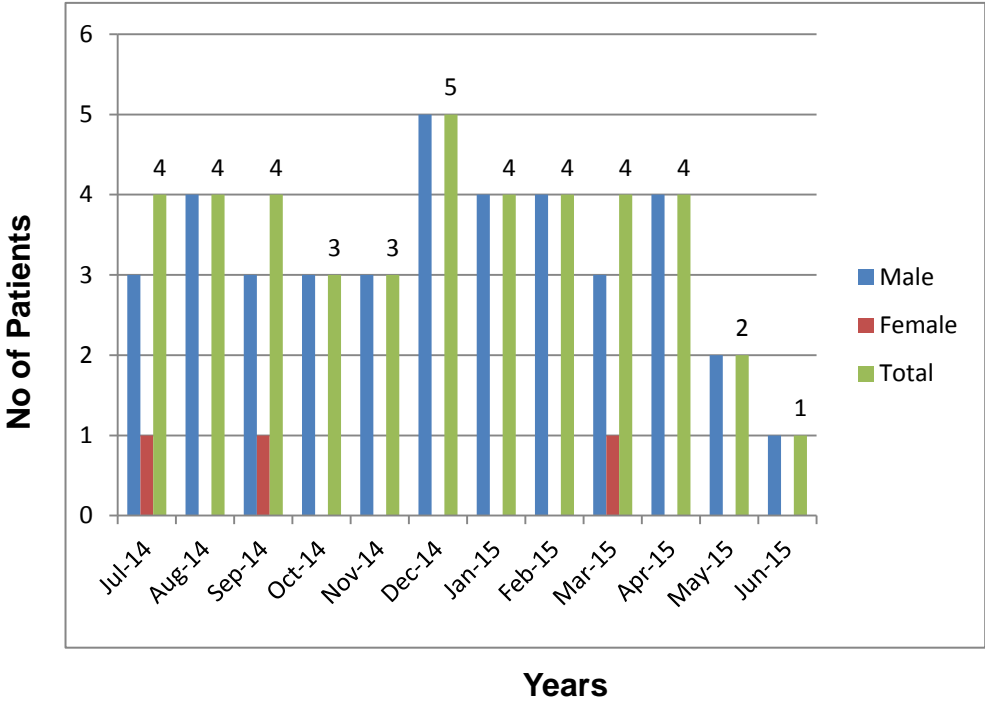
OPD & ER Summary July 2006 - Dec 2009



Summary of Bypass July 2014 To June 2015

S.No	Month & Year	Male	Female	Total
1	Jul-14	3	1	4
2	Aug-14	4	0	4
3	Sep-14	3	1	4
4	Oct-14	3	0	3
5	Nov-14	3	0	3
6	Dec-14	5	0	5
7	Jan-15	4	0	4
8	Feb-15	4	0	4
9	Mar-15	3	1	4
10	Apr-15	4	0	4
11	May-15	2	0	2
12	Jun-15	1	0	1
Total		39	3	42

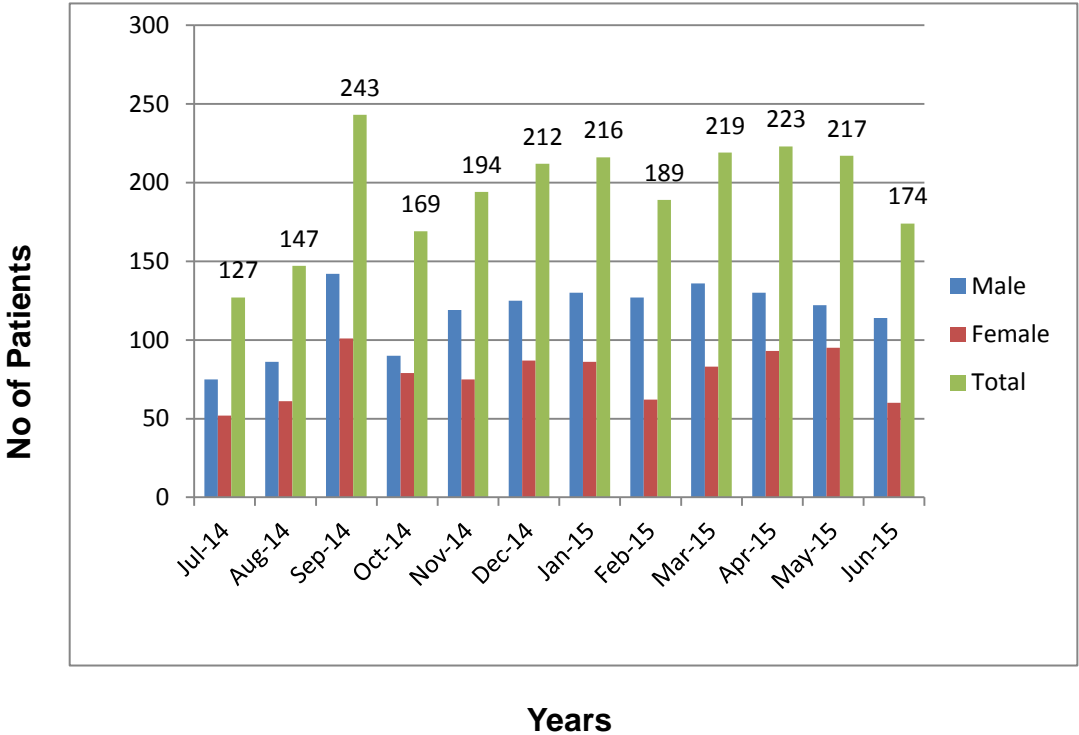
Summary Of Bypass 1 July 2014 - 30 June 2015



**Summary of Thallium
July 2014 To June 2015**

S.No	Month & Yea	Male	Female	Total
1	Jul-14	75	52	127
2	Aug-14	86	61	147
3	Sep-14	142	101	243
4	Oct-14	90	79	169
5	Nov-14	119	75	194
6	Dec-14	125	87	212
7	Jan-15	130	86	216
8	Feb-15	127	62	189
9	Mar-15	136	83	219
10	Apr-15	130	93	223
11	May-15	122	95	217
12	Jun-15	114	60	174
Total		1396	934	2330

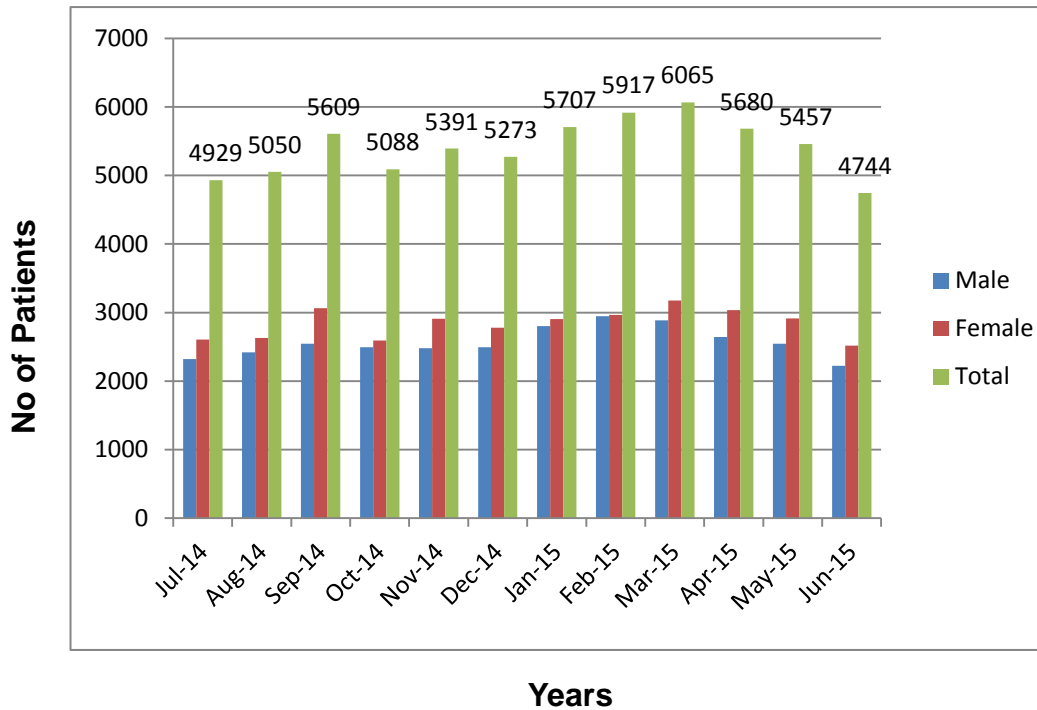
**Summary Of Thallium
1 July 2014 - 30 June 2015**



Summary of OPD July 2014 To June 2015

S.No	Month & Yea	Male	Female	Total
1	Jul-14	2322	2607	4929
2	Aug-14	2419	2631	5050
3	Sep-14	2545	3064	5609
4	Oct-14	2495	2593	5088
5	Nov-14	2481	2910	5391
6	Dec-14	2495	2778	5273
7	Jan-15	2802	2905	5707
8	Feb-15	2949	2968	5917
9	Mar-15	2888	3177	6065
10	Apr-15	2643	3037	5680
11	May-15	2544	2913	5457
12	Jun-15	2225	2519	4744
Total		30808	34102	64910

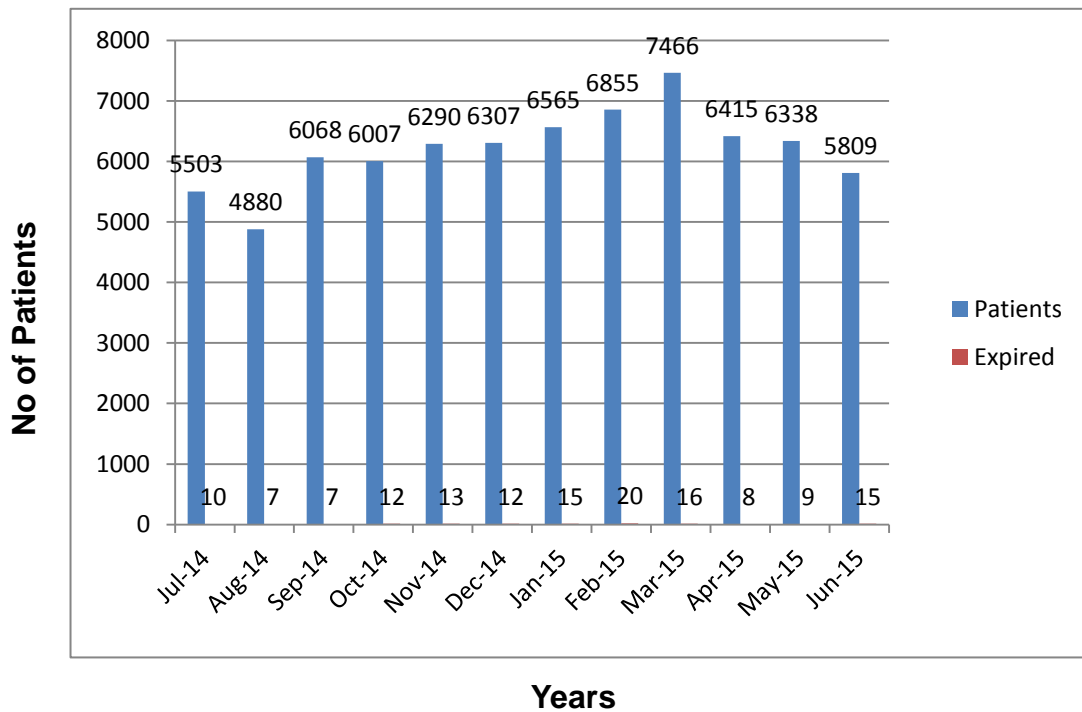
Summary Of O.P.D 1 July 2014 - 30 June 2015



Summary of ER July 2014 To June 2015

S.No	Month & Yea	Patients	Expired	B.D	% of Exp
1	Jul-14	5503	10	41	0.1817
2	Aug-14	4880	7	54	0.1434
3	Sep-14	6068	7	54	0.11535
4	Oct-14	6007	12	59	0.1997
5	Nov-14	6290	13	75	0.2066
6	Dec-14	6307	12	75	0.1902
7	Jan-15	6565	15	87	0.2284
8	Feb-15	6855	20	68	0.2917
9	Mar-15	7466	16	73	0.2139
10	Apr-15	6415	8	63	0.1247
11	May-15	6338	9	60	0.142
12	Jun-15	5809	15	105	0.2
Total		74503	144	814	0.188

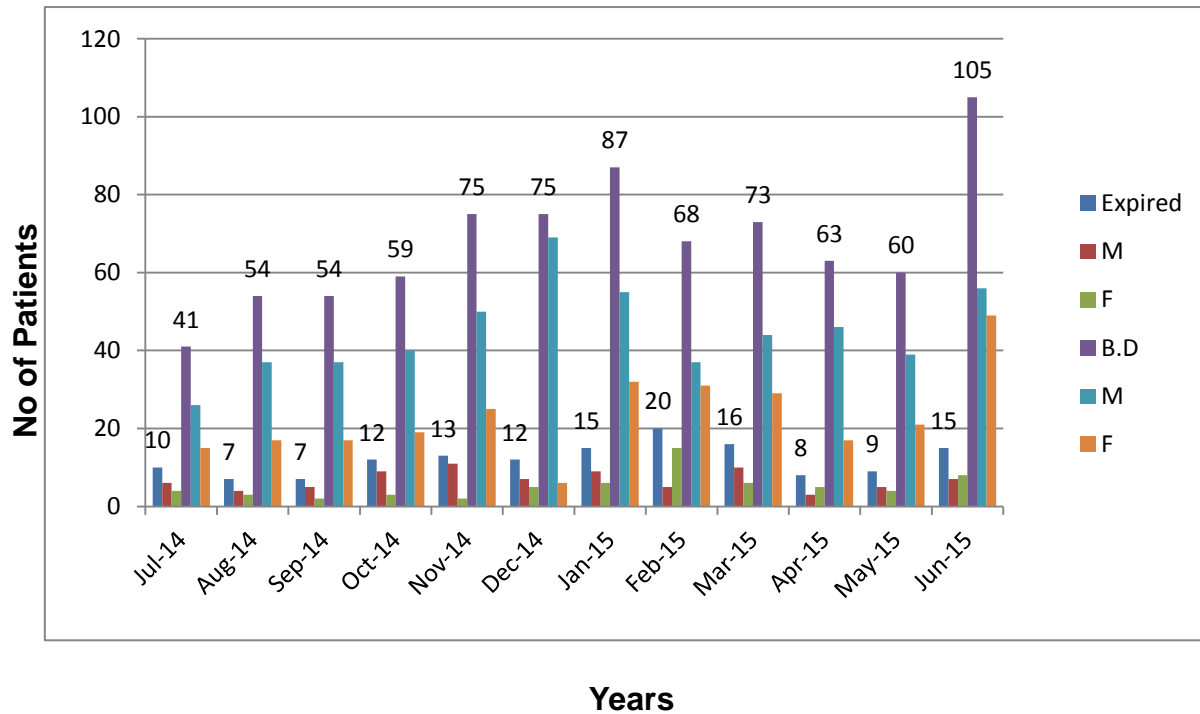
Summary Of E.R 1 July 2014 - 30 June 2015



Summary of ER (Expire & BD) July 2014 To June 2015

S.No	Month & Year	Expired	M	F	B.D	M	F
1	Jul-14	10	6	4	41	26	15
2	Aug-14	7	4	3	54	37	17
3	Sep-14	7	5	2	54	37	17
4	Oct-14	12	9	3	59	40	19
5	Nov-14	13	11	2	75	50	25
6	Dec-14	12	7	5	75	69	6
7	Jan-15	15	9	6	87	55	32
8	Feb-15	20	5	15	68	37	31
9	Mar-15	16	10	6	73	44	29
10	Apr-15	8	3	5	63	46	17
11	May-15	9	5	4	60	39	21
12	Jun-15	15	7	8	105	56	49
Total		144	81	63	814	536	278

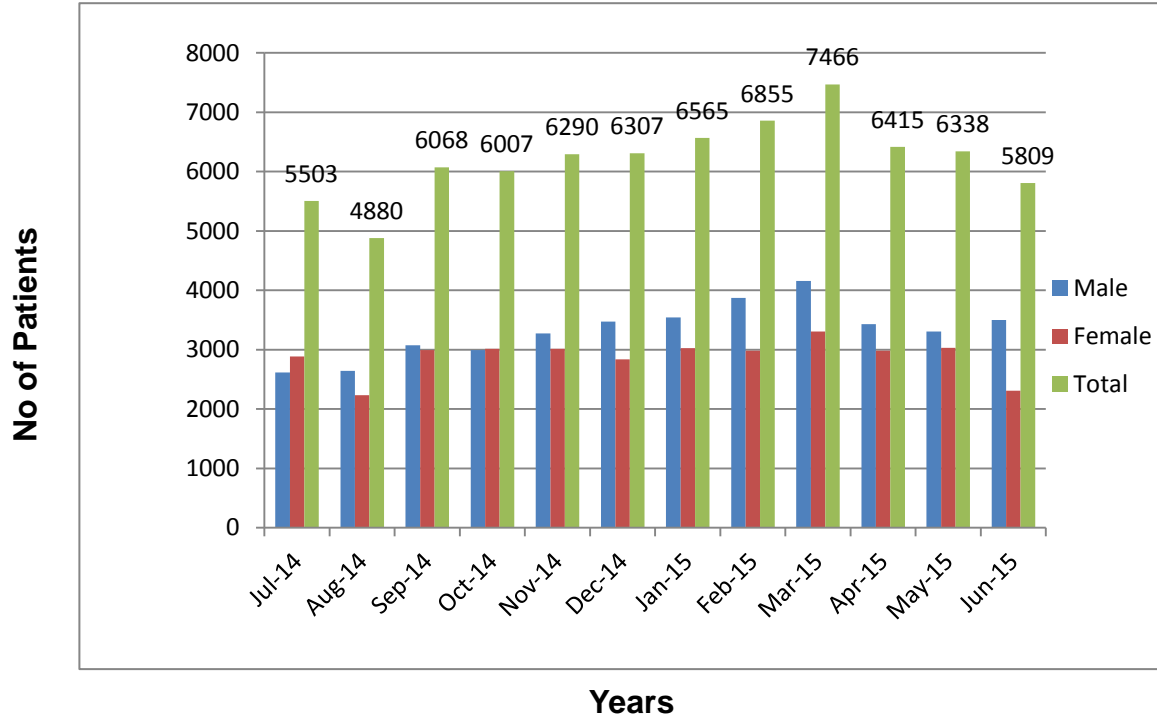
Summary Of E.R(Expire & BD) 1 July 2014 - 30 June 2015



Summary of ER July 2014 To June 2015

S.No	Month & Year	Male	Female	Total
1	Jul-14	2616	2887	5503
2	Aug-14	2645	2235	4880
3	Sep-14	3074	2994	6068
4	Oct-14	2993	3014	6007
5	Nov-14	3273	3017	6290
6	Dec-14	3471	2836	6307
7	Jan-15	3542	3023	6565
8	Feb-15	3874	2981	6855
9	Mar-15	4159	3307	7466
10	Apr-15	3431	2984	6415
11	May-15	3307	3031	6338
12	Jun-15	3499	2310	5809
Total		39884	34619	74503

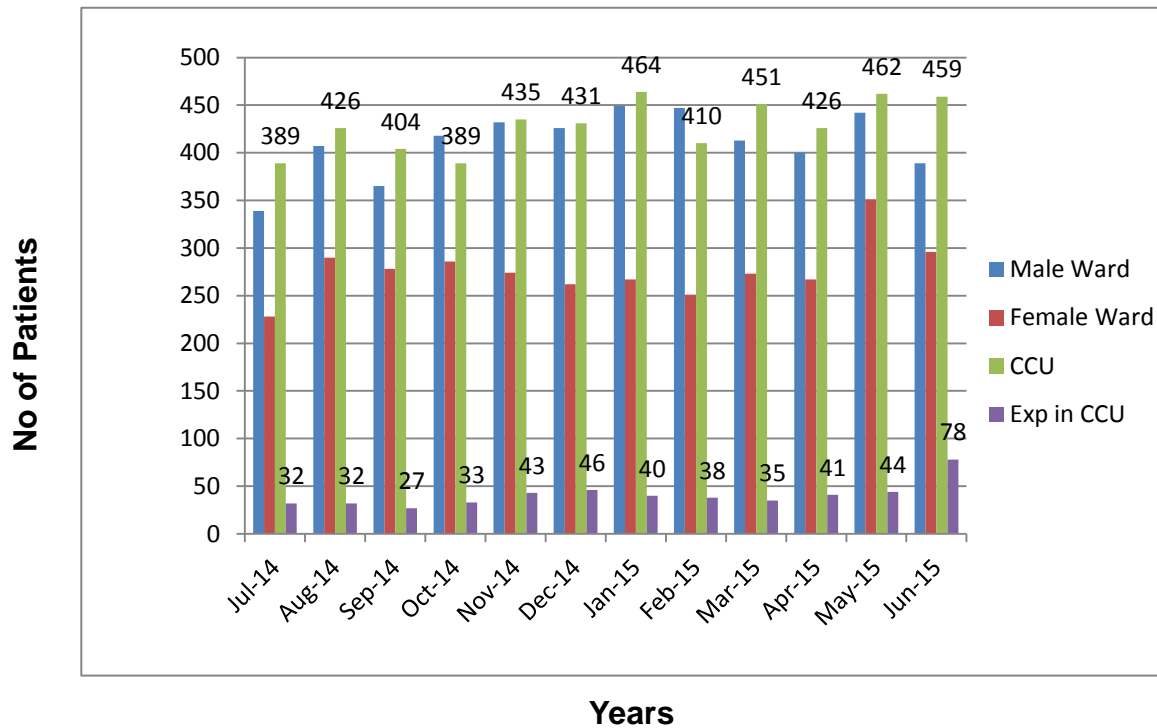
Summary Of E.R 1 July 2014 - 30 June 2015



Summary of Admission July 2014 To June 2015

S.No	Month & Year	Male Ward	Female Ward	CCU	Exp in CCU
1	Jul-14	339	228	389	32
2	Aug-14	407	290	426	32
3	Sep-14	365	278	404	27
4	Oct-14	418	286	389	33
5	Nov-14	432	274	435	43
6	Dec-14	426	262	431	46
7	Jan-15	449	267	464	40
8	Feb-15	447	251	410	38
9	Mar-15	413	273	451	35
10	Apr-15	400	267	426	41
11	May-15	442	351	462	44
12	Jun-15	389	296	459	78
Total		4927	3323	5146	489

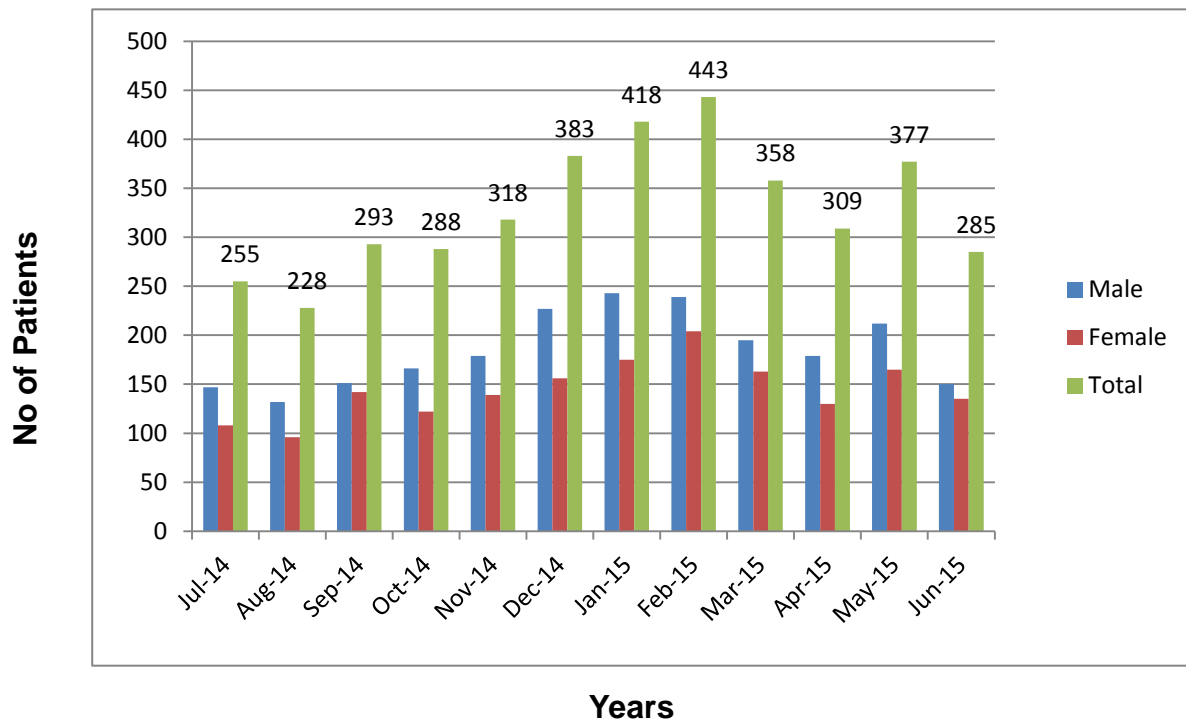
Summary Of Admission 1 July 2014 - 30 June 2015



Summary of X-Ray July 2014 To June 2015

S.No	Month & Year	Male	Female	Total
1	Jul-14	147	108	255
2	Aug-14	132	96	228
3	Sep-14	151	142	293
4	Oct-14	166	122	288
5	Nov-14	179	139	318
6	Dec-14	227	156	383
7	Jan-15	243	175	418
8	Feb-15	239	204	443
9	Mar-15	195	163	358
10	Apr-15	179	130	309
11	May-15	212	165	377
12	Jun-15	150	135	285
Total		2220	1735	3955

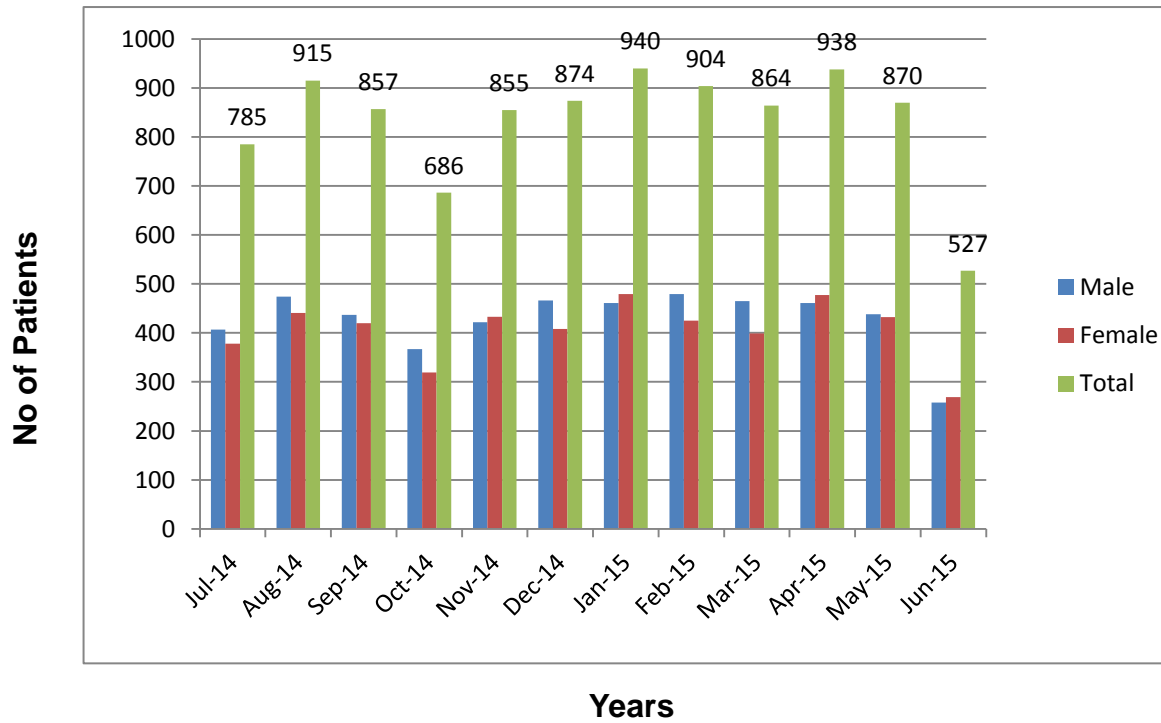
Summary Of X-Rays 1 July 2014 - 30 June 2015



Summary of Echo July 2014 To June 2015

S.No	Month & Year	Male	Female	Total
1	Jul-14	407	378	785
2	Aug-14	474	441	915
3	Sep-14	437	420	857
4	Oct-14	367	319	686
5	Nov-14	422	433	855
6	Dec-14	466	408	874
7	Jan-15	461	479	940
8	Feb-15	479	425	904
9	Mar-15	465	399	864
10	Apr-15	461	477	938
11	May-15	438	432	870
12	Jun-15	258	269	527
Total		5135	4880	10015

Summary Of ECHO 1 July 2014 - 30 June 2015

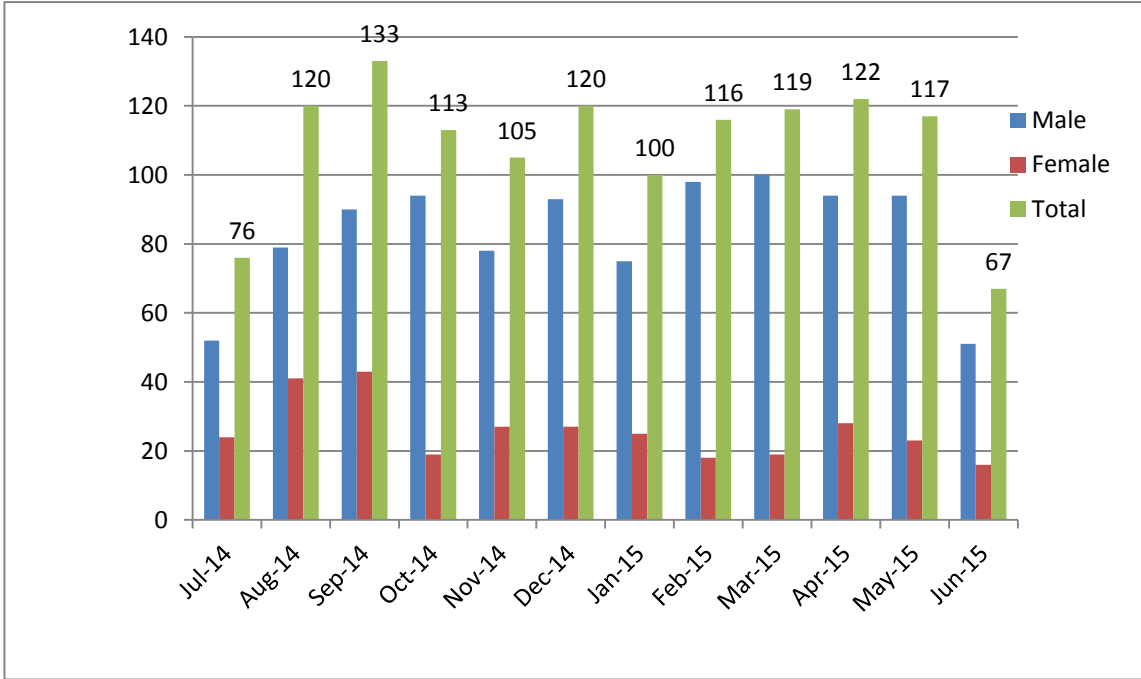


**Summary of ETT
July 2014 To June 2015**

S.No	Month & Year	Male	Female	Total
1	Jul-14	52	24	76
2	Aug-14	79	41	120
3	Sep-14	90	43	133
4	Oct-14	94	19	113
5	Nov-14	78	27	105
6	Dec-14	93	27	120
7	Jan-15	75	25	100
8	Feb-15	98	18	116
9	Mar-15	100	19	119
10	Apr-15	94	28	122
11	May-15	94	23	117
12	Jun-15	51	16	67
Total		998	310	1308

**Summary Of ETT
1 July 2014 - 30 June 2015**

No of Patients

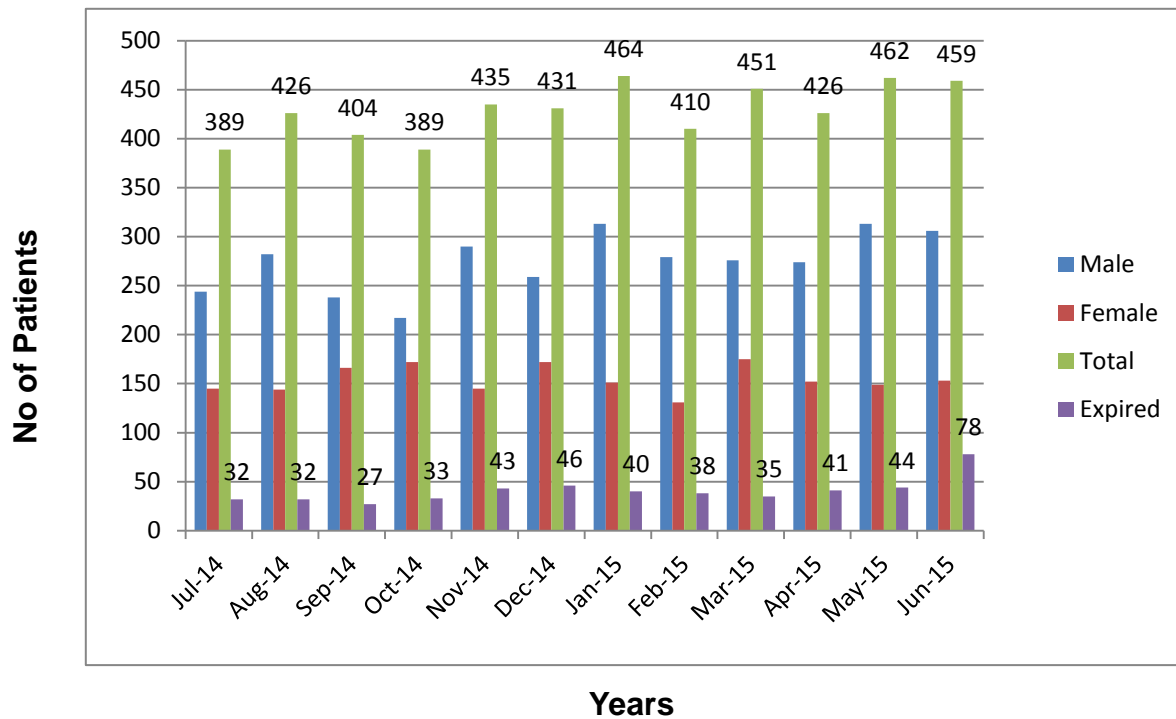


Years

Summary of CCU July 2014 To June 2015

S.No	Month & Year	Male	Female	Total	Expired	Male	Female
1	Jul-14	244	145	389	32	17	15
2	Aug-14	282	144	426	32	21	11
3	Sep-14	238	166	404	27	20	7
4	Oct-14	217	172	389	33	21	12
5	Nov-14	290	145	435	43	24	19
6	Dec-14	259	172	431	46	30	16
7	Jan-15	313	151	464	40	23	17
8	Feb-15	279	131	410	38	20	18
9	Mar-15	276	175	451	35	21	14
10	Apr-15	274	152	426	41	30	11
11	May-15	313	149	462	44	24	20
12	Jun-15	306	153	459	78	46	32
Total		3291	1855	5146	489	297	192

Summary Of CCU 1 July 2014 - 30 June 2015



Summary of CCU July 2014 To June 2015

S.No	Month & Year	Vent Patients	Male	Female	Vent Exp	Male	Female
1	Jul-14	42	23	19	24	11	13
2	Aug-14	28	16	12	12	8	4
3	Sep-14	37	22	15	13	11	2
4	Oct-14	27	16	11	17	11	6
5	Nov-14	45	24	21	23	12	11
6	Dec-14	47	31	16	25	16	9
7	Jan-15	42	23	19	23	14	9
8	Feb-15	40	20	20	15	7	8
9	Mar-15	37	24	13	18	11	7
10	Apr-15	35	24	11	25	15	10
11	May-15	38	17	21	22	10	12
12	Jun-15	31	13	18	30	12	18
Total		449	253	196	247	138	109

Summary Of CCU 1 July 2014 - 30 June 2015

